

ASHMOLEAN

MUSEUM OF ART AND ARCHAEOLOGY UNIVERSITY OF OXFORD

Rabbit Hunt



In the Chinese Calendar, 2011 is
the Year of the Rabbit.

Track down all the bouncing bunnies in Ashmolean.
You will need a pencil and a floorplan.

Start on the the Lower Ground Floor, gallery 1: Exploring the Past

Find this hunting horn.

Look closely until you spot the rabbit running along the horn.

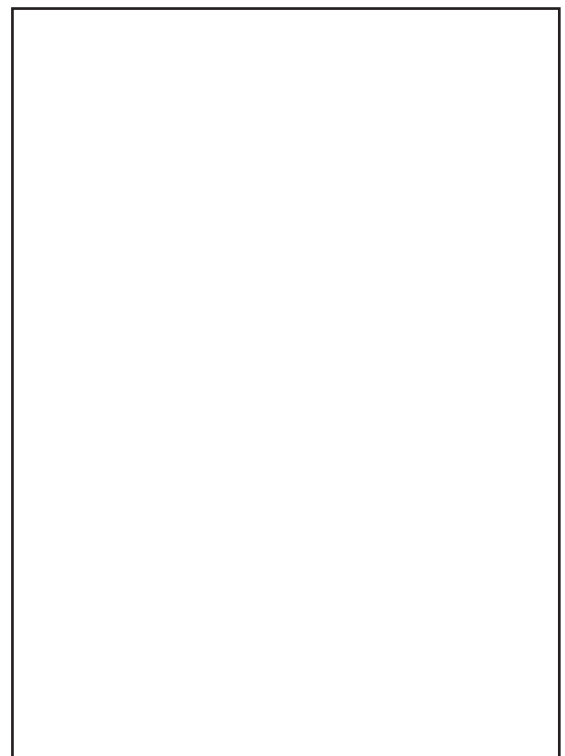
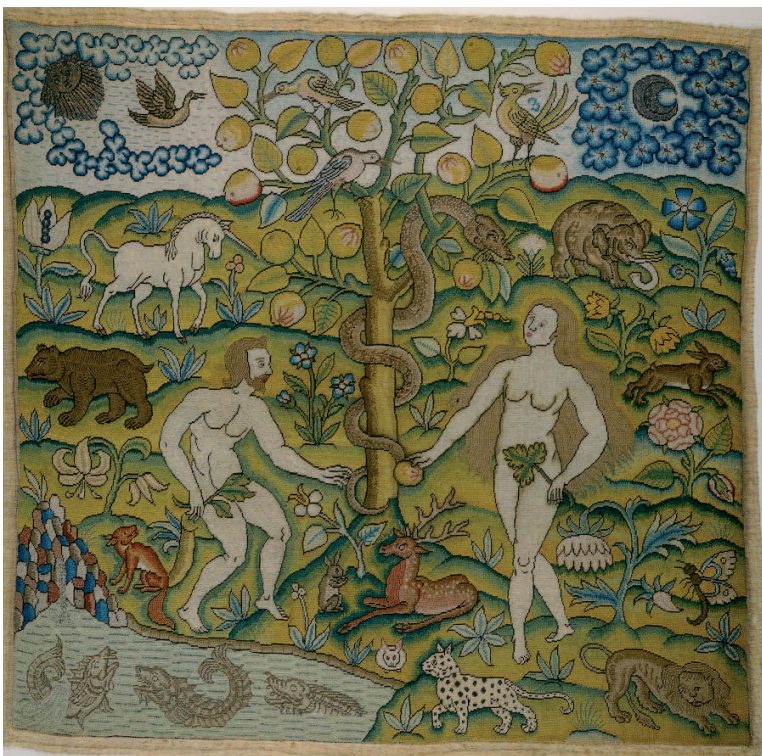


This is carved out of a stag's antlers. Can you spot a stag with antlers nearby?

Stay on the Lower Ground Floor, go to gallery 5: Textiles

Find this tapestry with Adam and Eve in the Garden of Eden. List all the animals you can see? Especially look out for the little rabbit!

Draw your favourite animal in the box below.



This was embroidered by hand using silk and metal threads.

Go to Level 1, gallery 32: India from AD 600



Find this **little** pot in the shape of a rabbit. He is hiding in a glass case in a quiet corner of the gallery. Can you see his ears and tail?

This pot is from Cambodia in South East Asia. Notice the decoration on it.

Stay on Level 1, gallery 33: Mughal India

You will have to look carefully at this box to see two rabbits on the front panel.

What else is happening on this box from Mughal India?



Go up to Level 2, go to gallery 37: Japan 1600 - 1900



This tiny rabbit is a Japanese miniature called a netsuki.

The rabbit has stopped what he is doing and looked up. What do you think he has seen?

Can you find out what Netsuki were used for?

Stay on the Level 2, gallery 56: Arts of the Renaissance



Find this tile with a rabbit leaping along in the Spanish pottery section.

This tile is part of a pair. What animal is on the tile next to it?

This tile is from Spain. Can you try bouncing along just like this rabbit?

Use the box below to draw a rabbit your way.
Will he be jumping along or perhaps eating a carrot?

Well done you've finished! What a clever bunny you are.
You can pick up a certificate from the Information Desk.