

ASHMOLEAN

Family Gallery Trail, suitable for age 6 +



Oxford History Trail

Discover objects from historical Oxford
Go to the Lower Ground Floor to begin

Get ready!

- Get ready to face 4 Ashmolean challenges.
- Go to the Lower Ground Floor of the Museum.
- Take a pencil with you.
- You will need to time some challenges, using a watch or mobile phone.
- You can check your answers at the back when you have finished.
- NO peeking until then!

1 Start in gallery 1:
Exploring the Past

THE OBSERVATION CHALLENGE

Find these two objects in two glass cases along the wall. Both of these objects are from Oxford.

Time yourself: you have 30 seconds to find out what ANIMAL they have in common.



Policeman's truncheon of an Oxford town policeman. Watch out - it's upside down in the case!



Blackjack jug, made of leather and used for drinking beer or ale.

By now you should have spotted an animal which is on the Oxford Coat of Arms. Which of these animals is on the Coat of Arms?:



2 Now go to
gallery 8:
**Ark to
Ashmolean**

THE RIDDLE CHALLENGE

Your next challenge is to find something special in this gallery. Solve the riddle to find the letters to spell out a word.

Riddle

My first is in GAME but not in SAME

My second is in LOST but not in COST

My third is in SOPPY but not in SILLY

My fourth is in VERY but not in MERRY

My last is in PEG but not in PIG

Here is a clue:

I am an item of clothing.

The answer is:

Now find a pair of these from Oxford in a glass case. These were given to Queen Elizabeth I on a royal visit to Oxford. She left them behind as they were too big!

Would these fit you?

How about a grown up you know?

3

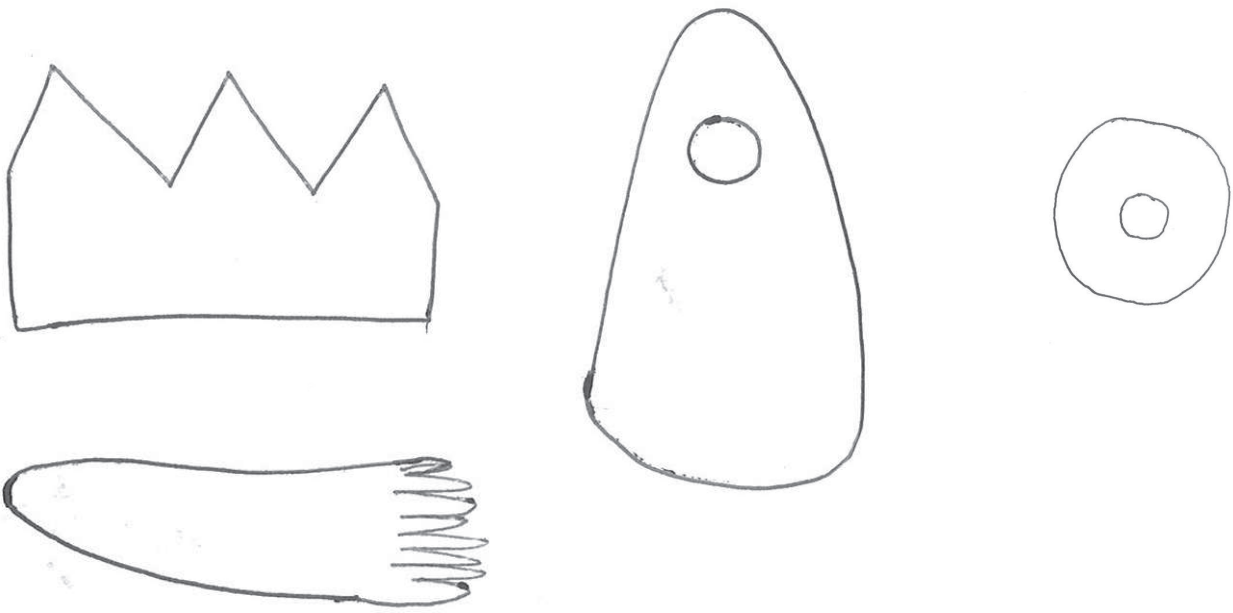
Now go to
gallery 5:
Textiles

THE REASONING CHALLENGE

Find a glass case against the wall near the weaving loom hands-on activity. The case is filled with ancient weaving equipment.

Look closely at the shapes of the objects in this case. Three of the following silhouettes match the shape of objects in the case. One of the following shapes is NOT in the display case.

Can you spot this odd one out?



Have a look at the labels to see how many of these weaving objects come from Oxfordshire.

Use the box below to either draw or describe your favourite pattern or picture on material in the textiles gallery. There are many patterns to look at in this gallery.

4 Stay in gallery 5: Textiles

THE COUNTING CHALLENGE

Find some peg dolls. They are wearing academic dress, which means that they are dressed like professors of the University of Oxford.

How many dolls are there altogether? _____

How many are holding something? _____

How many are wearing something red? _____
(look really closely)

How many are wearing the colour pink? _____



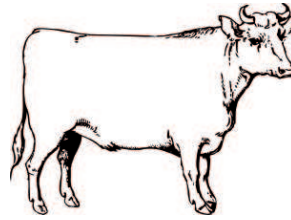
All the peg dolls say together: "Well done clever clogs!"
You've completed the challenge. You can check your answers now.

Pick up a well done certificate at the Information Desk.

Answers:

1) THE OBSERVATION CHALLENGE

The correct answer is the Ox.
Here is a picture of the Oxford coat of arms.



The red ox is crossing or fording the river Thames.

On either side there is an elephant and a green beaver.

The motto written in latin means 'truth is strength'.

2) THE RIDDLE CHALLENGE

The correct answer is GLOVE.
Queen Elizabeth I's gloves look like this.



3) THE REASONING CHALLENGE

This shape is the odd one out.



The other three shapes are of:



a bone comb beater



a loom weight



a spindle whorl

4) THE COUNTING CHALLENGE

There are 10 dolls altogether.
1 doll is holding a golden mace for University ceremonies.
5 dolls are wearing something red.
1 doll is wearing something pink.

Well done. We hope you enjoyed the Oxford History Trail.