

Key Stage: 2

National Curriculum

Subject Area/s:

History, Science, potential for cross-curricular work

Length of session:

1 hour and 30 minutes (KS2)

Max group size: 30 pupils

Session outline

This session explores life in Roman Britain. In this interactive session pupils will discover:

- how the Romans influenced the population of Britain
- when they invaded and what they brought with them
- what their buildings were like and how they lived

Activity 1: Life in Roman Britain

- Pupils will look for evidence in the gallery to find out what the Romans brought to Britain.
- They will discover more about Roman homes and daily life.
- They will discuss eating, drinking, lighting, heating and the different materials and technology used.

Activity 2: Evidence from objects

- Pupils will handle original artefacts to discover more about life in Roman Britain and the materials they used.
- They will search the gallery for objects highlighting aspects of daily life and choose an object to record.

Activity 3: Travel and Empire building

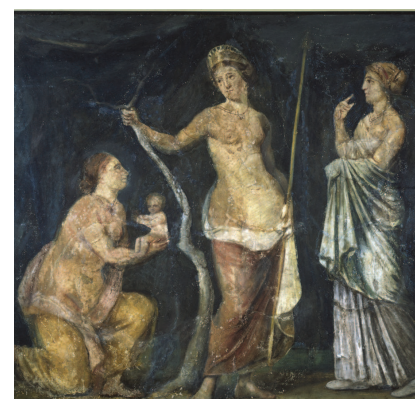
- Pupils will visit the Cast Gallery to look at life size Roman statues and find out more about how the Romans travelled and conquered the world.

Learning Outcomes

- Understanding more about life in Roman Britain and how the Romans influenced the population of Britain when they invaded.
- Understanding more about the different kinds of materials used by craftsmen.
- Knowledge and understanding of using archaeological evidence to learn about the past.
- Awareness of similarities and differences between life in Roman Britain and today.
- Understanding that objects can give us information about how people lived and worked.
- Improved speaking and listening skills.

'We had an absolutely wonderful time learning about the Romans. The children loved all the activities'

**Key Stage 2 teacher
Oldfield Primary
School**



Please see our current programme for information about dates we can offer and how to book

Education Department

Ashmolean Museum

Beaumont Street

Oxford OX1 2PH

T. 01865 278015

E. education.service@ashmus.ox.ac.uk

www.ashmolean.org/education

Pre visit activities

- Look at a map of Roman Empire.
- Find out about life in Britain before the Roman invasion.

Post visit activities

- Look at Roman buildings and statues in Britain.
- Research ancient Roman building styles and design.
- How did people dress in Roman Britain?
- Discover more about eating and drinking in the Roman world, and the similarities and differences with today. Create your own Roman menu.
- Look at ancient Roman numerals and the Roman alphabet.
- Design your own Roman coin
- Discover more about Hercules and other Roman myths and legends.
- Learn more about Roman statues and why they were made.

Resources

The following resources are available to download on our website:

Images of some of the objects used in the session

www.ashmolean.org.uk/education